

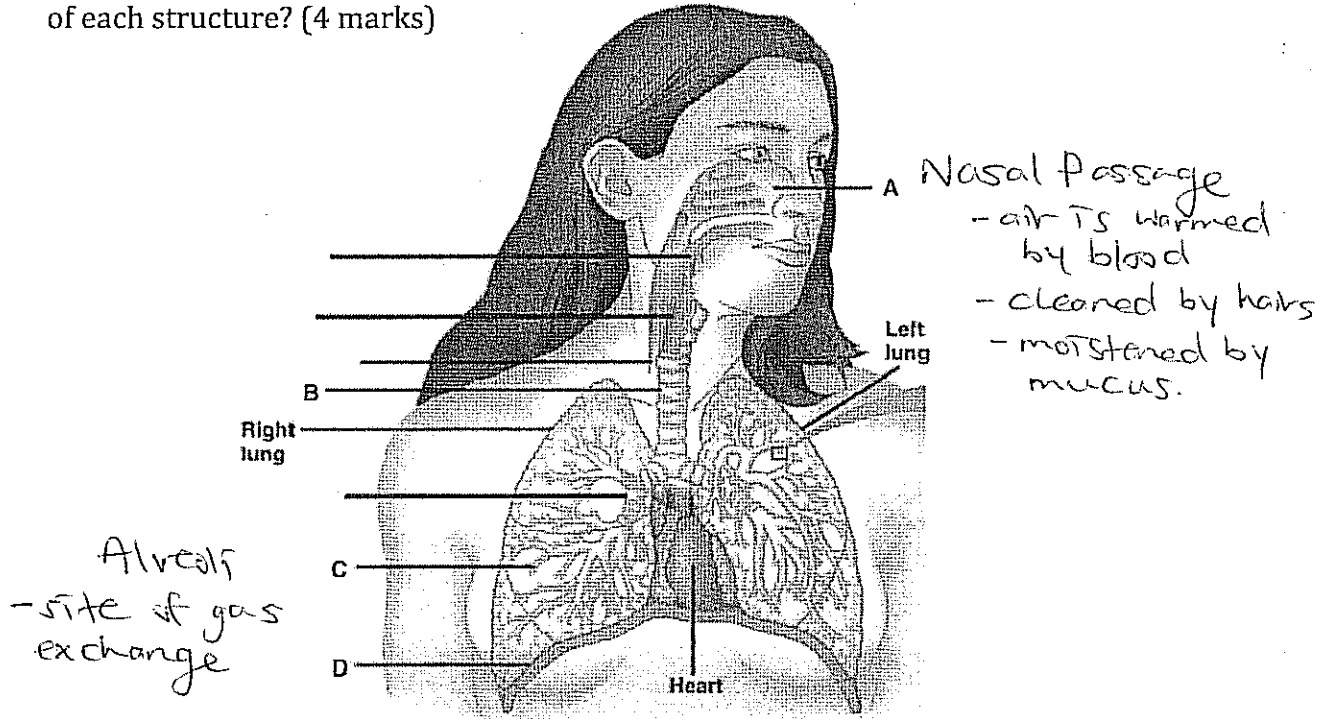
ANSWERS

Respiratory System Quiz (p. 4)

Name: _____

Date: _____

1. Identify the structures indicated by the letters A and C. What is the function of each structure? (4 marks)



2. Explain how diffusion is involved in internal respiration. Draw a diagram to support your answer. (3 marks)

Gas exchange between the blood and body's tissues and cells.

- O_2 diffuses from ~~blood~~ to cells
- CO_2 diffuses from cells to blood, to outside the body.

